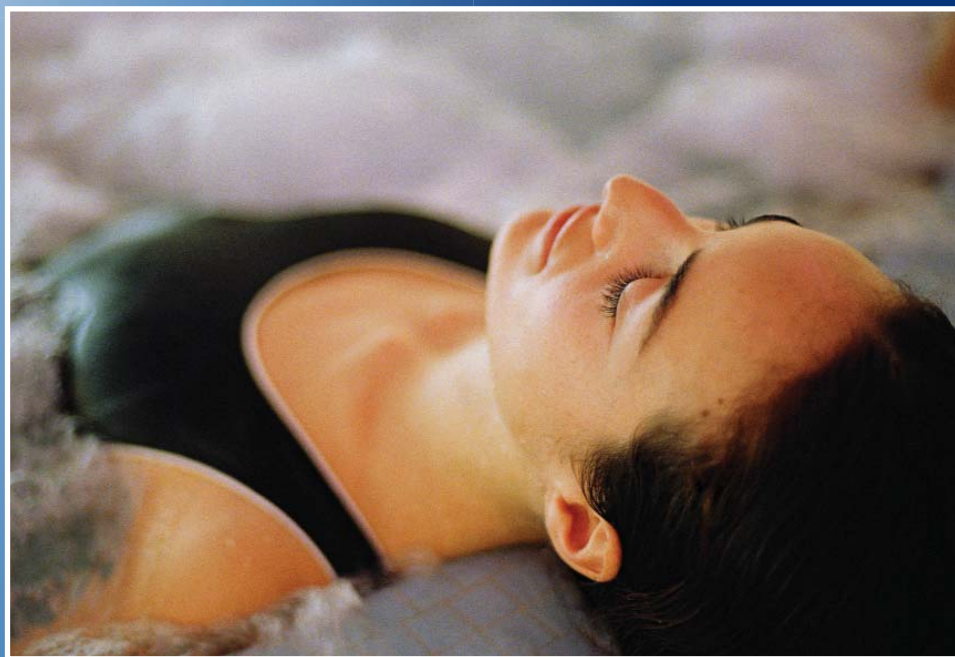


BROMINE-FREE  
CHLORINE-FREE

# BAQUA *spa.*

## spa care and water testing guide



Enjoy a clean, chlorine-free spa in three easy steps.



1

**Prevent**  
with BAQUASpa®  
Waterline Control



2

**Clarify**  
with BAQUASpa®  
Oxidizer



3

**Sanitize**  
with BAQUASpa®  
Sanitizer with  
Stain & Scale Control

# TABLE OF CONTENTS

ABOUT BAQUASpa® SYSTEM . . . . .	1
WATER BALANCE . . . . .	2
SPA CARE	
SIMPLE START-UP . . . . .	5
WEEKLY MAINTENANCE . . . . .	6
HOUSEKEEPING . . . . .	7
BAQUASpa PRODUCTS . . . . .	8
SPA SAFETY . . . . .	10
BAQUASpa TEST STRIPS . . . . .	12
SPA SOLUTION CENTER . . . . .	14
SPA MAINTENANCE LOG . . . . .	17

# ABOUT BAQUASpa®

## JUST A FEW MINUTES A WEEK...

The BAQUASpa Water Care System is simple to use. This step-by-step Care Guide has all the information you will need, from start-up to maintenance. Generally, caring for your spa with BAQUASpa is a simple 3 step, 3-product system:

**1** Add BAQUASpa Waterline Control.

**2** Add BAQUASpa Oxidizer.

**3** Add BAQUASpa Sanitizer with Stain & Scale Control.  
Test weekly and top-up if necessary.

**1** **Prevent**  
with BAQUASpa®  
Waterline Control

**2** **Clarify**  
with BAQUASpa®  
Oxidizer

**3** **Sanitize**  
with BAQUASpa® Sanitizer  
with Stain & Scale Control

## life's simple pleasures.

A few minutes in the spa can soak away the aches, strains and general stress of everyday life. No wonder spa owners look for the same things from the products they use: simple, no-nonsense protection against bacteria, and water that is fresh, clear and inviting. Transform your spa with the BAQUASpa Water Care System, and make it the pleasurable escape it was meant to be.

## bromine-free. chlorine-free. care-free.

BAQUASpa provides powerful, long-lasting protection against bacteria. And nothing is easier to use. BAQUASpa is bromine-free and chlorine-free... it's gentle on your eyes, hair and skin.

And now the benefits of BAQUASpa are even more appealing with the addition of Aqua Enhancers® – unique additives to several products in the line that condition your spa water to promote a truly skin-soothing experience.

## use less. enjoy more.

Unlike bromine and chlorine, BAQUASpa doesn't cause pH changes and is not affected by them. BAQUASpa is considerably more stable in hot water and lasts much longer than traditional spa treatments — so you don't have to test the water or add sanitizer nearly as often. And because BAQUASpa products are liquid, they're easier to use.

## just one call.

We hope you'll find this guide as easy to use as the BAQUASpa products themselves. If you do need additional help maintaining your spa, however, please contact your Authorized BAQUASpa Dealer. They are experienced professionals who are trained to help you get the most out of your spa, and the BAQUASpa Water Care System.

# WATER BALANCE

## a balanced composition

No matter which sanitizing system you choose, keeping the water balanced is essential to your enjoyment of the spa. Water is balanced when pH, total alkalinity and hardness are all within the proper range. Problems arise when any of these factors are too high or low. Unbalanced water can become corrosive or cause the formation of scale deposits. Corrosive water also attacks the integrity of metal components; pitting, etching and staining them. Scale formation causes cloudy water, surface staining or short filter cycling. Any of these conditions can cause problems for the spa, and irritations, especially of the eyes and skin, for the people using it.

**IMPORTANT: ALWAYS TURN SPA BLOWERS OFF PRIOR TO ADDING ANY CHEMICALS.**

**IMPORTANT: DO NOT USE BAQUASpa PRODUCTS IN UNTREATED WOODED HOT TUBS.**

## pH

Of all the factors covered in this section, pH has the greatest effect on water balance. The pH of water is a measure of how acidic or basic it is. The pH scale runs from 0 to 14, with 7.0 considered pH neutral. Anything below is acidic; above is basic. The ideal pH for the BAQUASpa Water Care System is 7.2–7.8. Using BAQUASpa® Test Strips, test your spa's pH weekly. It's simple to adjust. When the pH falls below 7.2, add BAQUASpa pH Increaser. When the pH rises above 7.8, use BAQUASpa pH Decreaser.

RAISING pH WITH BAQUASpa pH INCREASER					
To raise pH from	Spa Volume (gallons)				
	100	200	300	400	500
7.0 - 7.2	1/16	1/8	3/16	1/4	5/16
6.8-7.0	1/8	1/4	3/8	1/2	5/8
6.6 - 6.8	1/4	1/2	3/4	1	1 1/4
Below 6.6	1/2	1	1 1/2	2	2 1/2

All dosages are in dry ounces.

LOWERING pH WITH BAQUASpa pH DECREASER					
To lower pH from	Spa Volume (gallons)				
	100	200	300	400	500
7.8 - 8.0	1/8	1/4	3/8	1/2	5/8
8.0 - 8.2	1/4	1/2	3/4	1	1 1/4
8.2 - 8.4	1/2	1	1 1/2	2	2 1/2
Above 8.4	1	2	3	4	5

All dosages are in dry ounces.

## total alkalinity

Total Alkalinity is the amount of “buffer” present in water. These buffers prevent drastic changes in pH, called “pH bounce.” The proper Total Alkalinity range for spa water is 80-120 ppm. Try keeping the TA at the lower end of the recommended range.

RAISING TOTAL ALKALINITY (TA) WITH BAQUASpa TOTAL ALKALINITY INCREASER					
Desired TA increase in ppm	Spa Volume (gallons)				
	150	200	300	400	500
20	3/4	1	1 1/2	2	2 1/2
40	1 1/2	2	3	4	5
60	2 1/4	3	4 1/2	6	7 1/2
80	3	4	6	8	10
100	3 3/4	5	7 1/2	10	12 1/2
120	4 1/2	6	9	12	15

All measurements are in dry ounces.

LOWERING TOTAL ALKALINITY (TA) WITH BAQUASpa pH DECREASER					
Desired TA decrease in ppm	Spa Volume (gallons)				
	150	200	300	400	500
20	1	1 1/2	2	3	4
40	2	3	4	6	8
60	3	4	6	8	10
80	4	5 1/2	8	11	14
100	5	6 1/2	10	13	16
120	6	8	12	16	20
140	7	10 1/2	14	21	24
160	8	12	16	24	28
180	9	13 1/2	18	27	32
200	10	15	20	30	36

All measurements are in dry ounces.

## calcium hardness

All water contains some natural hardness, and it varies by geographic region. Calcium Hardness is the amount of dissolved calcium in your spa water. The correct hardness range is 200–400 parts per million (ppm).

RAISING CALCIUM HARDNESS (CH) WITH BAQUASpa CALCIUM HARDNESS INCREASER					
Desired CH increase in (ppm)	Spa Volume (gallons)				
	150	200	300	400	500
20	1/2	1	1 1/4	1 1/2	2
40	1 1/4	1 1/2	2 1/2	3 1/4	4
80	2 1/2	3 1/4	5	6 1/2	8
120	3 1/2	5	7 1/4	9 1/2	12
160	5	6 1/2	9 1/2	13	16
200	6	8	12	16	20
240	7 1/4	9 1/2	14 1/2	19 1/4	24

All measurements are in dry ounces.

When increasing calcium hardness, add chemicals in increments of no greater than 40ppm. For example, to raise calcium hardness 80ppm in a 300-gallon spa:

1. Add 2.5 ounces of BAQUASpa Calcium Hardness Increaser.
2. Circulate spa water for 15 minutes.
3. Add final 2.5 ounces of BAQUASpa Calcium Hardness Increaser.
4. Circulate for an additional 15 minutes.

# WATER BALANCE

## other important water balance factors

In addition to weekly pH testing, other water conditions should be tested by your BAQUASpa® Dealer, though on a less frequent basis. Every four weeks, or when you refill your spa, take a water sample to your dealer in a BAQUA Water Sample Bottle or a clean, plastic container, for the following tests:

- **Metals** Proper water balance is the key to achieving excellent water quality and protecting your spa equipment (shell, heater, etc.). If you are located in a high calcium or metal content area, use BAQUASpa Metal Control to control metals and protect against scaling. Metals can enter the water through corrosion of surfaces such as heating

elements in the spa's heater or from fill water. It is important that no metals be present in your spa water at any time, as they can cause sanitizer depletion, staining or discolored water.

- **Total Dissolved Solids** Total dissolved solids, or TDS, is the total amount of material dissolved in your spa water. Although the TDS concentration has little effect on water balance, a level above 2,000 ppm may cause problems with water clarity, sanitizer efficiency, eye irritation and taste. Be sure to follow dealer recommendations to correct any imbalances in your spa.

- **Temperature** For health reasons, keep your spa water temperature at or below 104°F. It is especially dangerous for children to be subjected to higher temperatures.

SUMMARY OF RECOMMENDED RANGES FOR WATER BALANCE FACTORS	
pH	7.2–7.8
Total Alkalinity	80–120ppm
Calcium Hardness	200–400ppm
Metals	None
Total dissolved solids	Not to exceed 2,000ppm
Water temperature	Not to exceed 104°F

# SPA CARE

## SIMPLE START-UP

**1 Prevent**  
with BAQUASpa®  
Waterline Control

**2 Clarify**  
with BAQUASpa®  
Oxidizer

**3 Sanitize**  
with BAQUASpa® Sanitizer  
with Stain & Scale Control

TO GET YOUR SPA OFF TO THE RIGHT START, FOLLOW THESE SIMPLE STEPS.

### important

- Fill spa, take a water sample (in a clean, plastic bottle) to your BAQUASpa® dealer for analysis.
- Balance water according to your BAQUASpa dealer's recommendations.
- Chemically clean your filter (refer to page 9 of this guide for more information).

### start-up dosage

1. Add start up dosage of BAQUASpa Waterline Control.
  - Prior to adding BAQUASpa Sanitizer with Stain & Scale Control.\*
2. Add a start up dosage of BAQUASpa Oxidizer.
  - Circulate the water on high speed for 15 minutes, with blowers off—do not inject air.
3. Add a start-up dosage of BAQUASpa Sanitizer with Stain & Scale Control.
  - Circulate the water for 15 minutes.

### test

Use a BAQUASpa Test Strip to test BAQUASpa Sanitizer with Stain & Scale Control level. If the level is between 30 and 50ppm, your spa is ready to use.

**TIP:** To ensure accurate testing, always store your test strips in a cool, well ventilated area. Always keep the lid sealed. Incorrect storage and handling may result in inaccurate readings.

### NOTE:

- The measuring cup should be thoroughly rinsed after each use.
- The outside of the BAQUASpa Oxidizer bottle should be wiped with a clean, damp cloth after use to remove any liquid that may have dripped onto it.

**BAQUASpa START-UP DOSAGE CHART**

Spa Volume (gallons)	BAQUASpa Waterline Control	BAQUASpa Oxidizer	BAQUASpa Sanitizer with Stain & Scale Control
100	1	2	2/3
150	1 1/2	3	1
200	2	4	1 1/4
250	2 1/2	5	1 1/2
300	3	6	1 3/4
350	3 1/2	7	2
400	4	8	2 1/2
450	4 1/2	9	2 3/4
500	5	10	3

All measurements are in liquid ounces. See your dealer for a special 3-oz. measuring cup.

**\*NOTE:** Chemicals can be added to either cold or hot water. If water temperature is cold, the addition of BAQUASpa Waterline Control may cause a temporary cloudy condition. Once the temperature reaches normal spa levels (98–104°F), the cloudiness will disappear. BAQUASpa Sanitizer with Stain & Scale Control will react with some impurities in the water to form insoluble particles. Within the small environment of a spa, these insolubles may be deposited on the spa shell, especially at initial start-up. This “bathtub ring” will vary depending on the quality of the fill water, and usually appears as yellow/brown, sticky deposits. Wipe affected areas clean with BAQUASpa Surface Cleaner. When used properly, BAQUASpa Waterline Control will eliminate deposits from forming on the spa shell.

# SPA CARE

## WEEKLY MAINTENANCE

**1 Prevent**  
with BAQUASpa®  
Waterline Control

**2 Clarify**  
with BAQUASpa®  
Oxidizer

**3 Sanitize**  
with BAQUASpa® Sanitizer  
with Stain & Scale Control

A CLEAR, HASSLE-FREE SPA IS EASY IF YOU FOLLOW THIS SIMPLE MAINTENANCE ROUTINE. REFER TO TOP-UP & MAINTENANCE DOSAGE CHART FOR DOSAGE RECOMMENDATIONS ACCORDING TO SPA VOLUME.

### important

Use a BAQUASpa® Test Strip to test water balance and adjust if necessary\* (see page 4).

### weekly

#### STEP1.

BAQUASpa Waterline Control

- Add a maintenance dosage – refer to chart below (Always add Waterline Control prior to adding the BAQUASpa Sanitizer).

#### STEP2.

BAQUASpa Oxidizer

- Add a maintenance dosage according to usage rate (refer to dosage chart below).
- Circulate on high speed for 15 minutes with blowers off.

#### STEP3.

BAQUASpa Sanitizer with Stain & Scale Control

- Check weekly and if needed top up if 30 ppm or below.
- The level should be maintained between 30 and 50ppm. Top-up according to the BAQUASpa Top-Up & Maintenance Dosage Chart below.

\*If using an ozonator, test your BAQUASpa Sanitizer level every four days and top-up as necessary to maintain a level of 30–50 ppm.

**TIP:** To ensure accurate testing, always store your test strips in a cool, well ventilated area. Always keep the lid sealed. Incorrect storage and handling may result in inaccurate readings.

Test sanitizer weekly and only add if needed. DO NOT OVERDOSE.

### BAQUASpa TOP-UP & MAINTENANCE DOSAGE CHART

WEEKLY/MAINTENANCE				TEST & ADD AS NEEDED	
Spa Volume (gallons)	BAQUASpa Waterline Control	BAQUASpa Oxidizer Regular Use	BAQUASpa Oxidizer High Use*	BAQUASpa Sanitizer with Stain & Scale Control (If level is 16–30ppm)	BAQUASpa Sanitizer with Stain & Scale Control (If level is 0–15ppm)
100	1/2	1	2	1/3	2/3
150	3/4	1 1/2	3	1/2	1
200	1	2	4	2/3	1 1/4
250	1 1/4	2 1/2	5	1	1 1/2
300	1 1/2	3	6	1	1 3/4
350	1 3/4	3 1/2	7	1 1/3	2
400	2	4	8	1 1/3	2 1/2
450	2 1/4	4 1/2	9	1 1/2	2 3/4
500	2 1/2	5	10	1 1/2	3

All measurements are in liquid ounces.

\*If spa is used three or more times per week, use the high-use dosage rate for Oxidizer.



# SPA CARE

## HOUSEKEEPING

### cover

Clean your cover every other week with BAQUASpa® Cover Cleaner, concentrating on the water side.

here's how:

1. If possible, place cover upside down on a flat surface.
2. Pour a puddle of BAQUASpa Cover Cleaner (about 6"–9" in diameter) onto cover underside and scrub with a Spa Cleaning Pad.
3. Rinse cover thoroughly and replace cover on spa.
4. Pour a 2"–3" puddle of BAQUASpa Cover Cleaner on top of cover and scrub with a Spa Cleaning Pad and rinse thoroughly.

### water changing guidelines

Although BAQUASpa Sanitizer with Stain & Scale Control is persistent at controlling bacteria, and longer lasting than bromine-or chlorine-based systems, it's important to remember that a spa is a small body of water. Continual use means bathers will deposit large amounts of dirt, perspiration, body oils, deodorant, makeup and other contaminants into a relatively small volume of water. We recommend changing your spa water every 60–90 days or whenever an extreme water quality problem develops. After draining, clean the empty spa shell thoroughly with BAQUASpa Surface Cleaner. Rinse thoroughly before refilling. This is also an ideal time to clean your spa cover and filter.

### shell

Clean your spa shell at the waterline regularly with BAQUASpa Surface Cleaner and a Spa Cleaning Pad.

### filter

Most spas have a cartridge filter. Check your owner's manual for details on how to remove the filter for cleaning. Clean your spa filter at least every 4-6 weeks with BAQUASpa Filter Cleaner\* – follow the label directions. Regular filter cleaning is an important step in your spa care routine and plays a key role in keeping your spa water clear all year long.

### why you should clean your spa filter.

By filter cleaning, we are not referring to your regular backwashing and rinse routine – but rather the process of chemically cleaning your filter. A filter that's operating properly keeps the water clear by trapping the hair, oils and cosmetics that wash off when people use the spa. When the filter is dirty this debris stays in the water.

Regular attention to your filter will result in:

- better circulation in your spa,
- effective distribution of chemicals,
- less opportunity for corrosion and scaling.

All in all, the result will be improved water clarity and that's what spa owners strive for all year long – so remember to give your filter a little TLC this year.

**NOTE:** Do not use filter cleaners that are recommended for pools. Always use a BAQUASpa recommended filter cleaner for use with your BAQUASpa Water Care System.

\*A degreaser/TSP (tri sodium phosphate) should not be used for filter cleaning.

# BAQUASpa® PRODUCTS

## BAQUASpa 3-Part Pack

Combines all 3 System Products in one convenient package.

## BAQUASpa Sanitizer with Stain & Scale Control

The principal ingredient in the BAQUASpa Water Care System. A bromine-free, chlorine-free liquid sanitizer that provides effective control of bacteria and protects against staining and discoloration due to metals. It stores indefinitely, is highly stable at elevated temperatures, and lasts longer than bromine.

## BAQUASpa Oxidizer

A liquid oxidizer consisting of specially stabilized hydrogen peroxide. Keeps spa water sparkling clear by oxidizing organic compounds.

## BAQUASpa Waterline Control

A unique, patented formula that prevents formation of waterline deposits on the spa shell.

## BAQUASpa 4-Way Test Strips

Water test strips for testing the level of BAQUASpa Sanitizer with Stain & Scale Control, Hardness, Total Alkalinity and pH.

## BAQUASpa Foam Disperser With Vitamin E



A highly concentrated liquid specially formulated to reduce foam in spas. Also contains vitamin E to condition spa water and promote a skin-soothing spa experience.

## BAQUASpa Filter Cleaner

A concentrated liquid cleaner that removes deposits from filter cartridges. Provides powerful citrus cleaning action and a pleasant lemon scent.

## BAQUASpa Spray & Rinse Filter Cleaner

Immediate action spray & rinse formula contains a colored blue dye for quick coverage indication. Removes grease, minerals and scale from cartridge filter elements in five minutes. Eliminates the leading cause of cloudy water.

## BAQUASpa Metal Control

A liquid metal control agent used to deactivate metals that can affect water clarity and filtration.

## BAQUASpa Cover Cleaner

A citrus-scented liquid cover cleaner that effectively removes dirt, dust and debris from both sides of the spa cover.

## BAQUASpa Surface Cleaner

A highly concentrated gel which removes dirt, oils, stains, etc. at the waterline. Effectively removes “bathtub ring” from spa shells. Safely cleans all types of spa shells.

## BAQUASpa Water Clarifier With Bioplex NMF



A liquid that restores water clarity by assisting the filter in removing tiny particles that can cause clouding. Also contains Bioplex NMF with moisturizers to condition and soften spa water for a relaxing spa experience.

## BAQUASpa® ScumShield®

Unique biodegradable formula cleans cloudy water by digesting oils, lotions and organics. The natural enzyme also removes organics that cause scumline build-up, odors and clog filters.

## BAQUASpa® Calcium Hardness Increaser

Raises spa water to the recommended level of calcium hardness.

## BAQUASpa pH Increaser With Mineral Salts



Raises spa water pH levels. Contains mineral salts for a fresh scent.

## BAQUASpa pH Decreaser With Mineral Salts



Lowers spa water pH levels. Contains mineral salts for a fresh scent.

## BAQUASpa Total Alkalinity Increaser

Raises spa water Total Alkalinity levels.

## BAQUASpa Sample Kit

The main components of the BAQUASpa Water Care System in convenient “trial” sizes. Enough product to treat and maintain the average-size spa for approximately 30 days. Includes free “how to” spa care guide.

## Spa Cleaning Pads

Handled cleaning pads to be used with BAQUASpa Surface Cleaner.

## being® aromatherapy for the mind, body and spirit

Line of aromatherapy products with aromatic blends for use in spas and baths.

## Now with Aqua Enhancers®



And now the benefits of BAQUASpa are even more appealing with the addition of Aqua Enhancers® unique additives to several products in the line that condition water to promote a truly skin-soothing spa experience.

# SPA SAFETY

YOUR SPA WILL GIVE YOU YEARS OF ENJOYMENT, YET LIKE ANY WATER RECREATION, THERE ARE CERTAIN PRECAUTIONS WHICH MUST BE FOLLOWED TO MINIMIZE THE RISK OF INJURY.

## tips for safe, healthy spa use

**Proper Ventilation:** If spas are inadequately ventilated, some users may experience slight throat irritation. Indoor spas should be adequately ventilated naturally or mechanically (i.e., an exhaust fan). If symptoms develop, take appropriate action to improve the ventilation of the area (open windows, install exhaust fan, etc.) and/or see your local BAQUASpa® dealer.

**Temperature:** Keep your spa water temperature no higher than 104°F.

Temperatures higher than this can place undue strain on the cardiovascular system. A quality, shatterproof thermometer should always be used to accurately measure spa water temperature.

**Medical Conditions:** Persons with diabetes, high blood pressure, heart disease or other cardiovascular conditions should consult their physician before using a spa.

**Shower First:** To reduce the likelihood of contaminating spa water and to minimize health risks, always shower with soap and water prior to use.

**Infection Spreading:** Persons with open sores or any type of infection should not use the spa. Hot water is an ideal environment for spreading infection, especially if sanitizer levels are not properly maintained.

**Soak Time:** Limit spa use to no more than 15 minutes at a time.

### **Restrict Alcohol Use and Medications:**

Never drink alcoholic beverages before or during spa use. Alcohol can make you drowsy and lead to drowning. People taking medication should consult their physician before soaking in a spa.

**Child Safety:** Children should not be permitted to use the spa without adult supervision.

**Pregnancy:** Women who are pregnant should consult their physician before using a spa.

**Long Hair:** Always tie long hair back to keep it away from the filter intake and drain.

**Slips and Spills:** Handrails and non-slip surfaces will help to minimize the risk of slipping and falling.

**Electrical Appliances:** Never use any electrical devices while using a spa.

**Severe Weather:** Do not operate or soak in a spa during severe weather conditions (i.e., electrical storms, tornadoes, etc.).

## handling chemicals

- Never mix chemicals together. The result could be fire, explosion or release of dangerous gas.
- Most spa chemicals are harmful if swallowed —many can injure skin and eyes.

### keep out of reach of children.

- Always store chemicals in a cool, dry, well-ventilated place. Chemicals must be kept in their original containers. They must never be stored next to a heat source or open flame. Do not store in car trunk, or next to other chemicals — especially fertilizers and insecticides.
- Always add the chemical to the water, never the water to the chemical. Keep containers closed to seal out water or contamination.
- Always use clean, dry equipment when handling, transferring or measuring chemicals.
- Always follow label instructions for any chemical spills.
- Know the first aid instructions for all the chemicals you use. Keep emergency medical and poison control numbers handy. In case of emergency, call the poison control center nearest you or call 1-800-654-6911.
- Don't smoke and handle chemicals. Some of the fumes are explosive.
- Keep concentrated chemicals away from lawn and plantings.
- Always make sure containers are tightly resealed immediately after use.
- Always wear the proper protective equipment (rubber gloves, safety goggles, etc.) when handling chemicals.

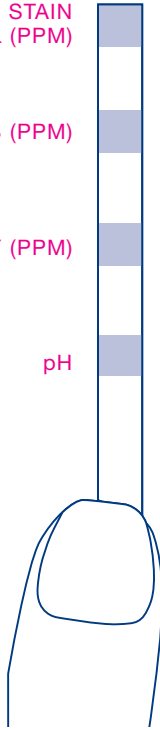
# BAQUASpa® TEST STRIPS

BAQUASpa SANITIZER WITH STAIN  
& SCALE CONTROL (PPM)

CALCIUM HARDNESS (PPM)

TOTAL ALKALINITY (PPM)

pH



## four tests in one

BAQUASpa Test Strips are a quick and easy way to check your spa water's BAQUASpa Sanitizer with Stain & Scale Control, Calcium Hardness, Total Alkalinity and pH levels. Each of the four pads on the test strip checks for a different water condition.

## tips for best results

- Always dry your hands before removing test strips from the bottle.
- Replace and tighten the lid immediately after removing a strip to help keep the rest fresh.
- Store the strips in a cool, dry place.
- Leave the packet of drying agent in the bottle.

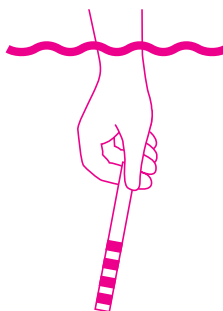
## how to use BAQUASpa® Test Strips

### step 1



Remove BAQUASpa Test Strip from the bottle and replace cap tightly. Dip the strip into your spa for one second and remove.

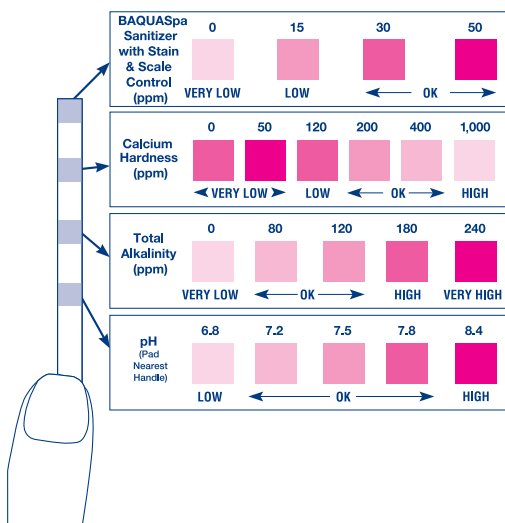
**Important:** Do not “swish” the strip back and forth, as this will affect the accuracy of the test.



### step 2



Hold the strip level, pad side up, for 15 seconds. Do not shake excess water from the test strip.



**step 3:** Compare the BAQUASpa Sanitizer with Stain & Scale Control, Calcium Hardness, Total Alkalinity and pH pads to the corresponding color blocks on the BAQUASpa Test Strip bottle. The color chart will tell you whether or not your BAQUASpa Sanitizer with Stain & Scale Control, Calcium Hardness, Total Alkalinity and pH are at the appropriate levels. If not, refer to the appropriate section in this guide for instructions on how to bring your levels within the proper ranges. This Spa Maintenance Log on page 16 is for you to record the results of your tests.

# SPA SOLUTION CENTER

The chlorine-free BAQUASpa® Water Care System was developed to give you a clear, sparkling spa all year round. Even so, problems can occur, below we have highlighted the most common spa problems. If you do need additional help maintaining your spa, however, please contact your **Authorized BAQUASpa Dealer**. They are experienced professionals who are trained to help you get the most out of your spa, and the BAQUASpa Water Care System.

PROBLEM	CAUSE	SOLUTION
Calcium deposits on spa shell rough surface	Water not in balance	Test water balance and adjust if necessary. Clean with <b>BAQUASpa Surface Cleaner</b> .
Cloudy water	Water not in balance Dirty or damaged filter. Low BAQUASpa Sanitizer with Stain & Scale level. Addition of incompatible chemicals. Build-up of body oils, impurities.	Test water balance and adjust if necessary. Clean or change filter cartridge*. Test <b>BAQUASpa Sanitizer</b> with Stain & Scale Control level and adjust if necessary. Drain spa and refill. Add <b>BAQUASpa Oxidizer</b> and <b>BAQUASpa ScumShield</b> to prevent build up.
Colored water	Copper or iron metals in spa due to fill water or corrosion of heater. Total alkalinity, pH are low.	Add <b>BAQUASpa Metal Control</b> . Test water balance and adjust if necessary.
Eye and skin irritation	Water not in balance. Inadequate BAQUASpa Sanitizer with Stain & Scale Control level. Build-up of body oils, impurities. Addition of incompatible chemicals.	Test water balance and adjust if necessary. Adjust sanitizer level. Add <b>BAQUASpa Oxidizer</b> . Drain spa and refill. Clean or change filter.
Throat irritation	Associated with aeration of spa.	Test water balance and adjust if necessary. Add maintenance dose of <b>BAQUASpa Waterline Control</b> . Improve ventilation of indoor spa. Adjust calcium hardness to above 300.

\*A degreaser/TSP (tri sodium phosphate) should not be used during the filter cleaning process as products containing phosphates are incompatible with the BAQUASpa Sanitizer with Stain & Scale Control.



<b>PROBLEM</b>	<b>CAUSE</b>	<b>SOLUTION</b>
Excessive foam	<p>Low Calcium hardness.</p> <p>Addition of incompatible chemicals.</p> <p>Build-up of body oils, impurities.</p> <p>Old water.</p>	<p>Test water balance and adjust if necessary.</p> <p>Drain spa and refill.</p> <p>Add <b>BAQUASpa Oxidizer</b>.</p> <p>Drain spa and refill.</p>
Odor	<p>Inadequate cleaning of spa cover.</p> <p>Inadequate cleaning of filter.</p> <p>Inadequate cleaning of spa shell.</p> <p>Inadequate ventilation.</p> <p>Addition of incompatible chemicals.</p> <p>Insufficient oxidation.</p>	<p>Clean the underside of the spa cover with <b>BAQUASpa Cover Cleaner</b>.</p> <p>Chemically clean filter with <b>BAQUASpa Filter Cleaner*</b>.</p> <p>Clean spa shell with <b>BAQUASpa Surface Cleaner</b>.</p> <p>Improve ventilation of indoor spa.</p> <p>Drain spa and refill.</p> <p>Add <b>BAQUASpa Oxidizer</b>.</p>
Sticky waterline deposits	<p>Not using BAQUASpa Waterline Control.</p> <p>Water not in balance.</p> <p>Build-up of body oils, impurities.</p>	<p>Use maintenance dose of <b>BAQUASpa Waterline Control</b> weekly. Clean with <b>BAQUASpa Surface Cleaner</b>.</p> <p>Test water balance and adjust if necessary. Clean with <b>BAQUASpa Surface Cleaner</b>.</p> <p>Add <b>BAQUASpa Oxidizer</b> and <b>BAQUASpa ScumShield</b> to prevent build up.</p> <p>Clean with <b>BAQUASpa Surface Cleaner</b>.</p>
High sanitizer consumption	<p>Metals present in water.</p>	<p>Add remedial dose of <b>BAQUASpa Metal Control</b>.</p>
Metal present in water	<p>Water not in balance and corrosive Metals in fill water.</p>	<p>Add <b>BAQUASpa Metal Control</b>.</p>

**NOTE:** Most water chemistry problems can be resolved by the recommended solutions above. Extreme chemical conditions may warrant draining and refilling the spa. Stains or calcium deposits on the spa may require attention prior to refilling.

\*A degreaser/TSP (tri sodium phosphate) should not be used during the filter cleaning process as products containing phosphates are incompatible with the BAQUASpa Sanitizer with Stain & Scale Control.

## SPA MAINTENANCE LOG

	Date Tested	BAQUASpa® Sanitizer with Stain & Scale Control test reading (Top-up to 50ppm if at or below 30ppm)	BAQUASpa Sanitizer with Stain & Scale Control dosage (Amount added)	pH reading (between 7.2 and 7.8) after adjusting with BAQUASpa Balance Chemicals	BAQUASpa Oxidizer (Amount added)	BAQUASpa Waterline Control (Amount added)	Notes
1							
2							
3							
4							
5							
6							
7							
8							
9							
10							
11							
12							
13							
14							
15							
16							
17							
18							
19							
20							
21							
22							
23							
24							
25							

- 1 Prevent**  
with BAQUASpa®  
Waterline Control
- 2 Clarify**  
with BAQUASpa®  
Oxidizer
- 3 Sanitize**  
with BAQUASpa® Sanitizer  
with Stain & Scale Control

<b>BAQUASpa START-UP DOSAGE CHART</b> please highlight appropriate spa size.			
Spa Volume (gallons)	BAQUASpa Waterline Control	BAQUASpa Oxidizer	BAQUASpa Sanitizer with Stain & Scale Control
100	1	2	2/3
150	1 1/2	3	1
200	2	4	1 1/4
250	2 1/2	5	1 1/2
300	3	6	1 3/4
350	3 1/2	7	2
400	4	8	2 1/2
450	4 1/2	9	2 3/4
500	5	10	3

All measurements are in liquid ounces. See your dealer for a special 3-oz. measuring cup.

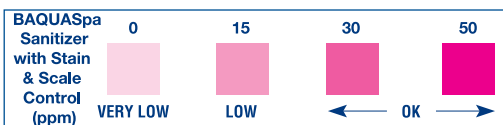
<b>BAQUASpa TOP-UP &amp; MAINTENANCE DOSAGE CHART</b> please highlight appropriate spa size.					
WEEKLY/MAINTENANCE				TEST & ADD <b>AS NEEDED</b>	
Spa Volume (gallons)	BAQUASpa Waterline Control	BAQUASpa Oxidizer Regular Use	BAQUASpa Oxidizer High Use*	BAQUASpa Sanitizer with Stain & Scale Control (If level is 16–30ppm)	BAQUASpa Sanitizer with Stain & Scale Control (If level is 0–15ppm)
100	1/2	1	2	1/3	2/3
150	3/4	1 1/2	3	1/2	1
200	1	2	4	2/3	1 1/4
250	1 1/4	2 1/2	5	1	1 1/2
300	1 1/2	3	6	1	1 3/4
350	1 3/4	3 1/2	7	1 1/3	2
400	2	4	8	1 1/3	2 1/2
450	2 1/4	4 1/2	9	1 1/2	2 3/4
500	2 1/2	5	10	1 1/2	3

All measurements are in liquid ounces.

\*If spa is used three or more times per week, use the high-use dosage rate for oxidizer.

See your dealer for a special 3-oz. measuring cup.

## BAQUASpa SANITIZER WITH STAIN & SCALE CONTROL LEVEL



If you're using an ozonator, test your BAQUASpa Sanitizer with Stain & Scale Control level every four days and top-up as necessary.

BROMINE-FREE  
CHLORINE-FREE

**BAQUA**  
*spa*

Compliments of your  
BAQUASpa® authorized dealer

[www.baquaspa.com](http://www.baquaspa.com)

***IMPORTANT: Do not use BAQUASpa products in  
untreated wooded hot tubs.***